

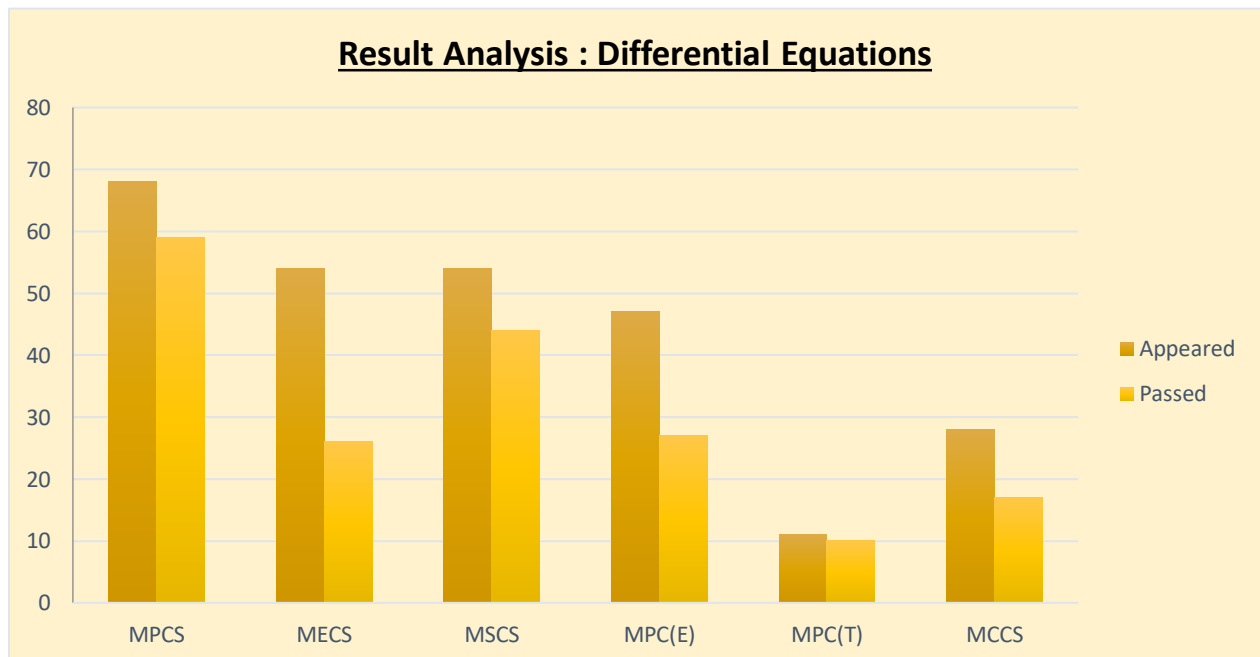
SRR & CVR Government College (A), Vijayawada

DEPARTMENT OF MATHEMATICS

Result Analysis :: 2019-2020

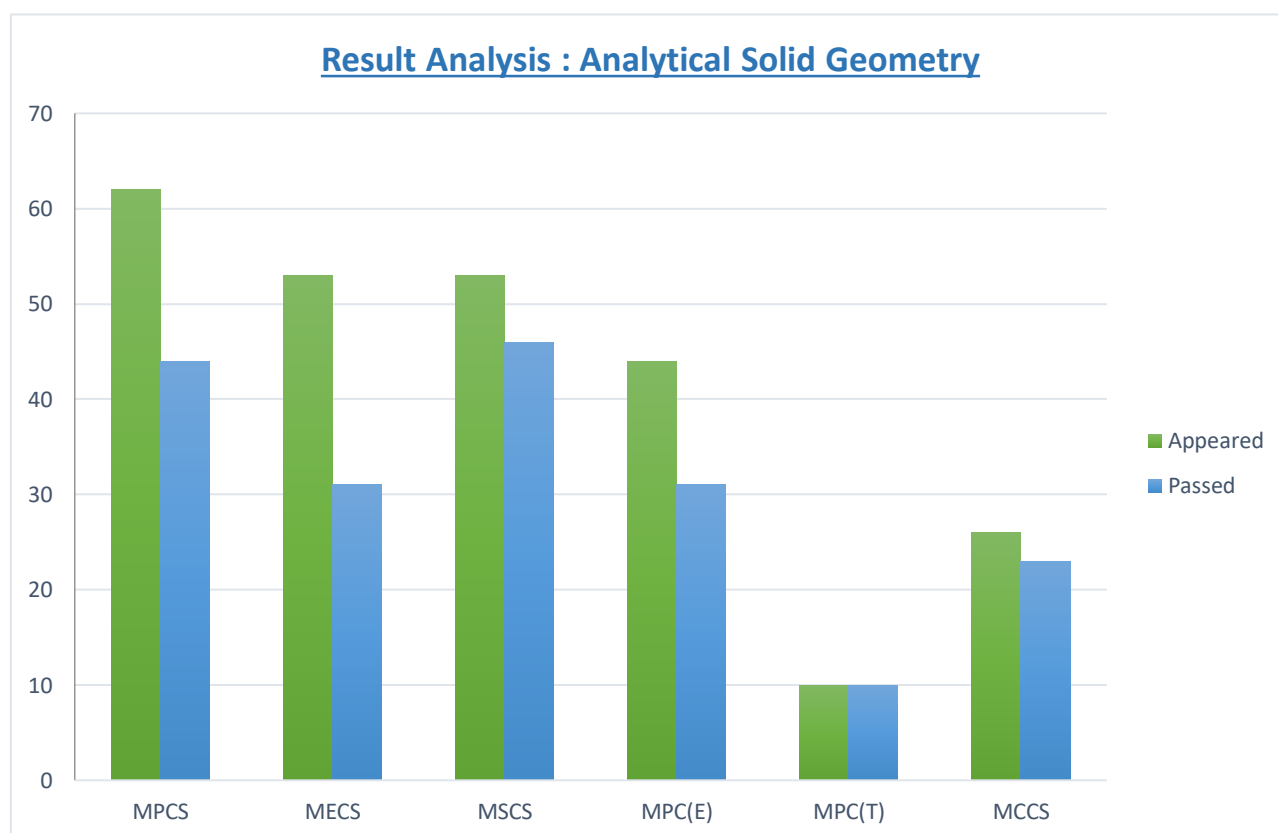
Semester I: Paper 1 - Differential Equations

Course	Group	Appeared	Passed	Pass Percentage
B. SC	MPCS	68	59	86.76%
B. SC	MECS	54	26	48.14%
B. SC	MSCS	54	44	81.48%
B. SC	MPC(EM)	47	27	57.44%
B. SC	MPC(TM)	11	10	90.90%
B. SC	MCCS	28	17	60.71%



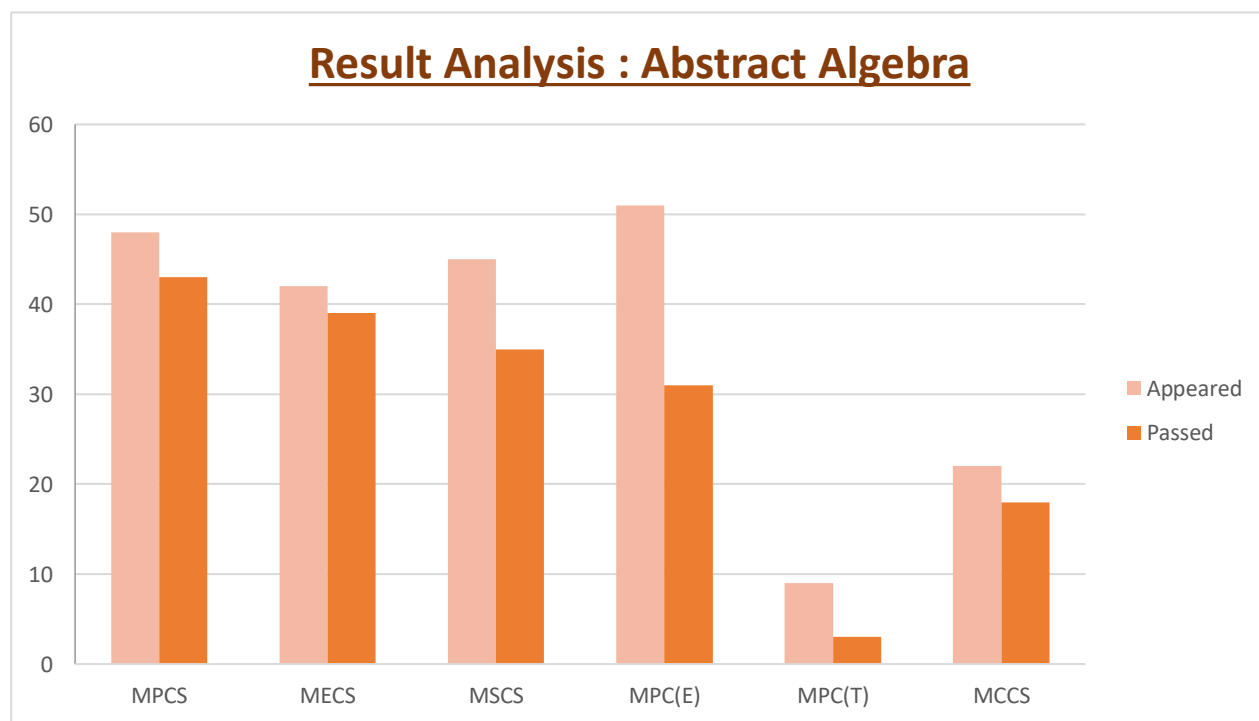
Semester II : Paper 2 – Analytical Solid Geometry

Course	Group	Appeared	Passed	Pass Percentage
B. SC	MPCS	62	44	70.96%
B. SC	MECS	53	31	58.49%
B. SC	MSCS	53	46	86.79%
B. SC	MPC(EM)	44	31	70.45%
B. SC	MPC(TM)	10	10	100%
B. SC	MCCS	26	23	88.46%



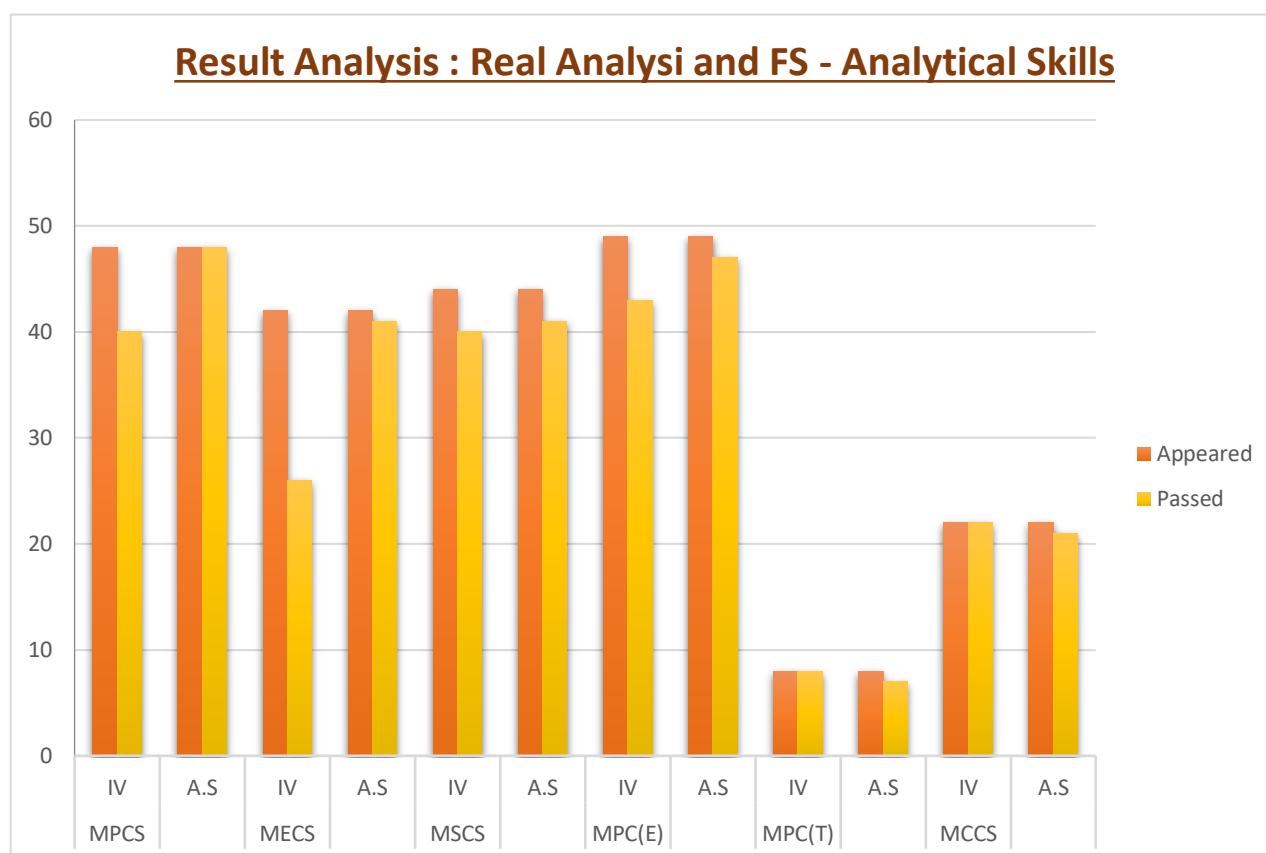
Semester III : Paper 3 – Abstract Algebra

Course	Group	Appeared	Passed	Pass Percentage
B. SC	MPCS	48	43	89.5%
B. SC	MECS	42	39	92.86%
B. SC	MSCS	45	35	78%
B. SC	MPC(EM)	51	31	60.7%
B. SC	MPC(TM)	09	03	33.3%
B. SC	MCCS	22	18	81.8%



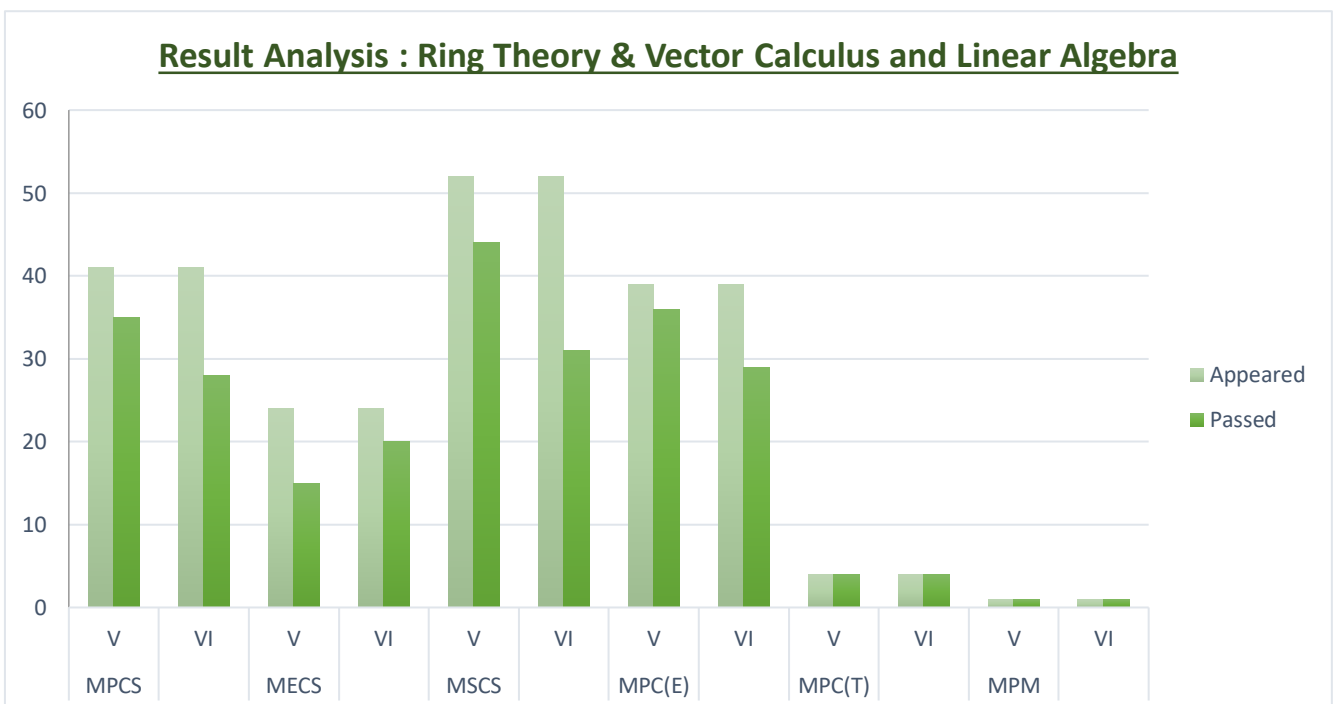
Semester VI : Paper 4 – Real Analysis and FS - Analytical Skills

Course	Group	Paper	Appeared	Passed	Pass Percentage
B. SC	MPCS	IV	48	40	83%
		A.S	48	48	100%
B. SC	MECS	IV	42	26	62%
		A.S	42	41	97.62%
B. SC	MSCS	IV	44	40	91%
		A.S	44	41	93%
B. SC	MPC(EM)	IV	49	43	88%
		A.S	49	47	96%
B. SC	MPC(TM)	IV	08	08	100%
		A.S	08	07	87.5%
B. SC	MCCS	IV	22	22	100%
		A.S	22	21	95%



Semester V : Paper 5 – Ring Theory & Vector Calculus and Paper 6 – Linear Algebra

Course	Group	Paper	Appeared	Passed	Pass Percentage
B. SC	MPCS	V	41	35	85.3%
		VI	41	28	69%
B. SC	MECS	V	24	15	62.5%
		VI	24	20	83.3%
B. SC	MSCS	V	52	44	85%
		VI	52	31	60%
B. SC	MPC(EM)	V	39	36	92.3%
		VI	39	29	74.36%
B. SC	MPC(TM)	V	04	04	100%
		VI	04	04	100%
B. SC	MPM	V	01	01	100%
		VI	01	01	100%



Semester VI : Paper 7 – Numerical Analysis
Paper 8A1 – Integral Transforms
Paper 8A2 – Advanced Numerical Analysis and
Paper 8A3 – Project Work

Course	Group	Paper	Appeared	Passed	Pass Percentage
B. SC	MPCS	VII	38	38	100%
B. SC	MECS	VII	24	23	95.8%
B. SC	MSCS	VII	33	29	88%
B. SC	MPC(EM)	VII	36	36	100%
B. SC	MPC(TM)	VII	04	04	1 00%
B. SC	MPM	VII	01	01	100%
B.Sc	Cluster	VIII A1	38	38	100%
B.Sc	Cluster	VIII A2	42	42	100%
B.Sc	Cluster	VIII A3	42	42	100%

